

LAKESCOUT

BY WINTER RECREATION TECHNOLOGIES LLC



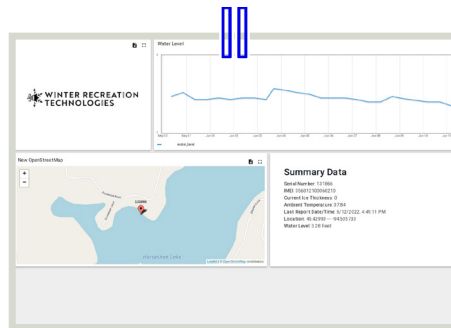
LAKE LIFE JUST GOT EVEN BETTER.

Monitor your favorite fishing hole from anywhere, anytime with LAKESCOUT™.

Check on your favorite water body from the comfort of your home or office. With LAKESCOUT, outdoor enthusiasts of all kinds can monitor water bodies remotely from anywhere you have an internet connection.

LAKESCOUT is a data buoy capable of year-round operation in the harshest of conditions. The water monitor is easy to deploy and can be used year-round. Get updates and insights on lake water elevation, water and ice temperature, and even ice thickness – all while saving drive time and miles!

HOW IT WORKS



LAKESCOUT is installed like a buoy. Place the anchor at the bottom of the lake and turn on the power switch. LAKESCOUT can also be deployed in the winter by cutting a hole in the ice and dropping it in place.

Once installed, LAKESCOUT takes measurements every 12 hours and transmits data wirelessly to an online portal. View the data remotely on a computer or mobile device.

The device is highly reflective and easily visible, and it can be recharged and used in all seasons. Access to the data can easily be shared with others if you choose.



At Winter Recreation Technologies, we use the most current technologies to develop products that give you better insights into outdoor conditions and the ability to monitor changes remotely and in real-time. WRT is proudly located in Richmond, Minnesota.

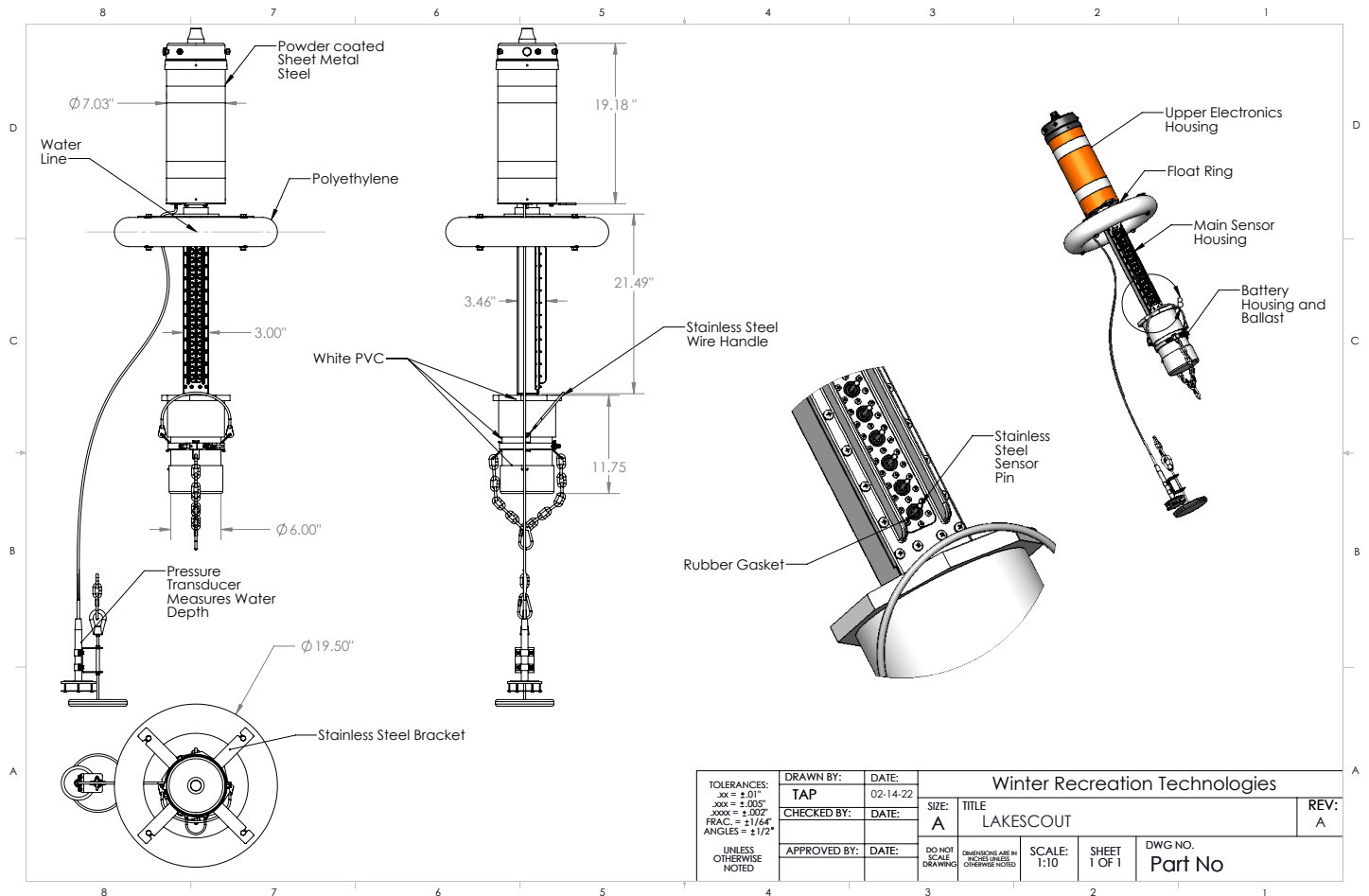




SPECIFICATION SUMMARY

- Ice Thickness: 2-16 inches in 2-inch increments (standard) or 1-16 inches in 1-inch increments (option)
- Water Elevation: Measurement over a 7-foot span with .01-foot resolution and +/- .04-foot accuracy. Either NAVD88 or NGVD29 vertical datums may be used
- Water/Ice temperature measurement: -12 to 90 degrees Fahrenheit with 0.01-degree resolution and +/- 0.2-degree accuracy
- Ambient temperature measurement: -40 to 110 degrees Fahrenheit with 0.01-degree resolution and +/- 0.5-degree accuracy
- Open water: Integrated flotation assembly allows deployment as a traditional buoy (anchor attachment provided)
- In ice: Drill a 10-inch hole and drop LAKESCOUT in
- 24 AH rechargeable battery with 6+ months of battery life
- Cellular LTE CAT M network connectivity
- Web-based portal for device management and data viewing

DIMENSIONS



Enjoy lake life like never before. Order your LAKESCOUT water monitor today by emailing info@winrectech.com or calling 612-229-3941.

Find us at www.winrectech.com.

No ice is ever completely safe. This device is meant to provide information as to the possible thickness of the ice that exists only where the unit is located. Winter Recreation Technologies LLC makes no warranties, express or implied, as to the ability of this product to determine whether any ice surface is safe to be entered upon by the user. Any act or failure to act based on a reading from this product shall be at the user's own risk.